

MBPX 31 T4 0,25kW (502203141XD)

GENERAL DATA



PLASTIC ATEX FAN WITH BACKWARD IMPELLER

MANUFACTURING FEATURES

- Antistatic PE-el antistatic housing.
- Backward curved impeller in PP plastic.
- Motor support made of rolled steel sheet with polyester powder finishing coat.
- Stainless steel nuts and bolts.
- Standard asynchronous squirrel-cage motor, IP-55, class F insulation. Standard voltages 230/400V 50Hz. Equipped with II2G Eex-d motor.
- Standard orientation: LG270.

APPLICATIONS

Designed for inline installation, they are suitable for:

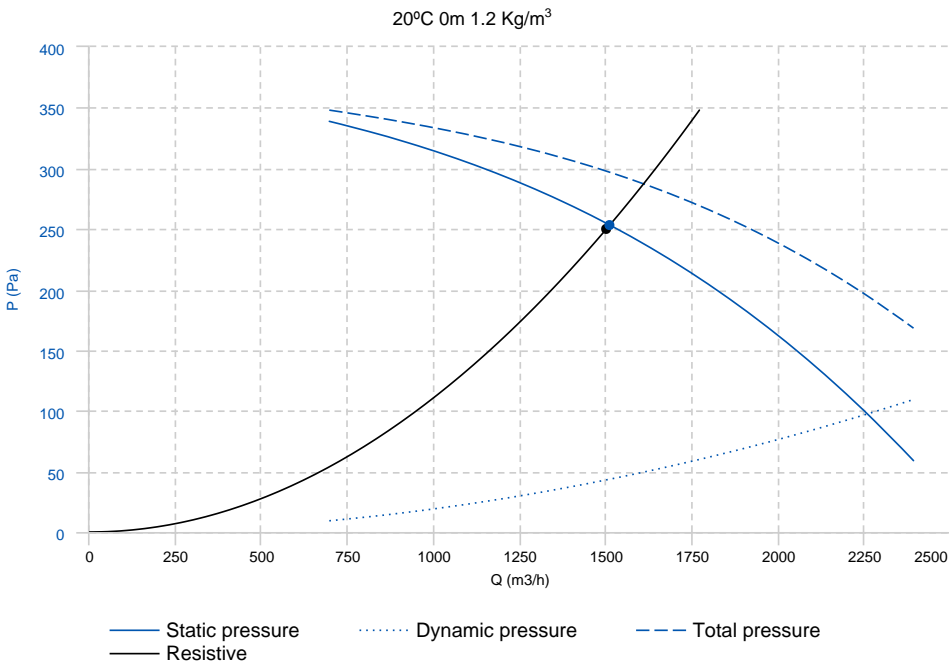
- Corrosive air transport.
- Chemical and petrochemical industry.
- Laboratories and gas cabinets.
- General ventilation in closed environments classified as ATEX zone 2.
- Temperatura máxima del aire transportado: si es aire limpio a 70°C, otros dependerá del gas (consulte la tabla en la documentación)

UNDER REQUEST

- 60Hz fans and special voltages fans.
- Stainless steel motor support.

In compliance with the ATEX Directive 2014/34/UE. Certified ATEX II3G o II3D with certified ATEX motor for areas 2 (gas) or 22 (dust)

PERFORMANCE CURVE



Design point

Flow (m3/h)	1500
Pressure (Pa)	250

Service point

T.max (°C)	50
Q (m3/h)	1509.58
Ps (Pa)	253.2
Pd (Pa)	43.56
Pt (Pa)	296.76
Speed (m/s)	8.52

TECHNICAL DATA

Fan

RPM	1400
-----	------

Approx. weight	19 kg
----------------	-------

Max. Flow	2390 m3/h
-----------	-----------

Motor

Power	0,25 kW
-------	---------

reports.motor_rpm	1400
-------------------	------

I max. (400V)	0,84 A
---------------	--------

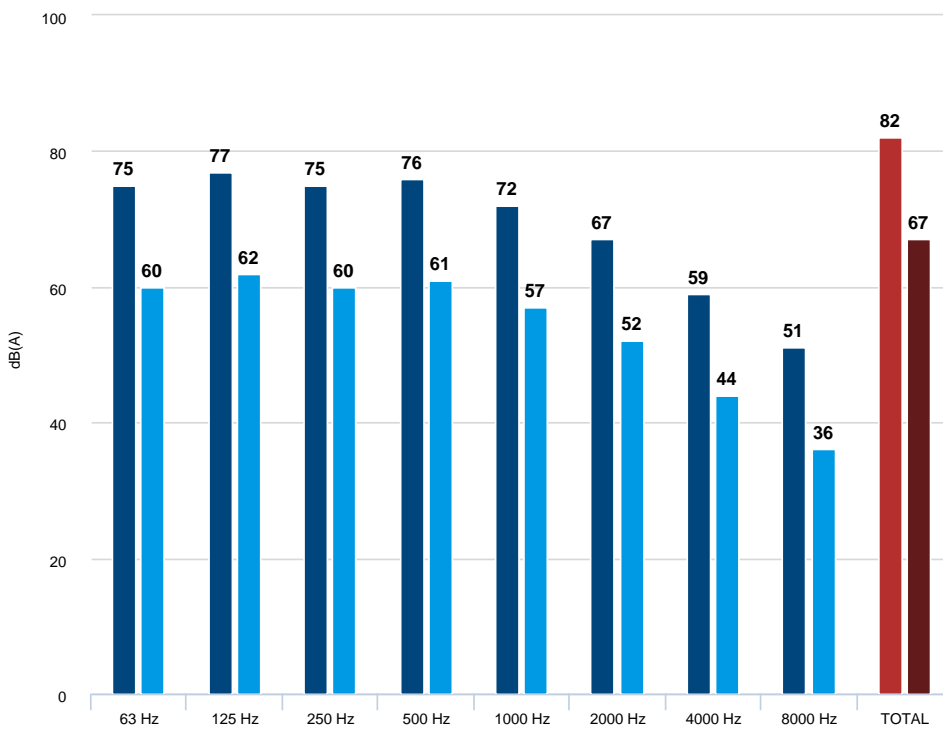
Size	71
------	----

Approx. weight	6.5 kg
----------------	--------

Efficiency (%)	55 %
----------------	------

FP	0.65
----	------

ACOUSTIC DATA



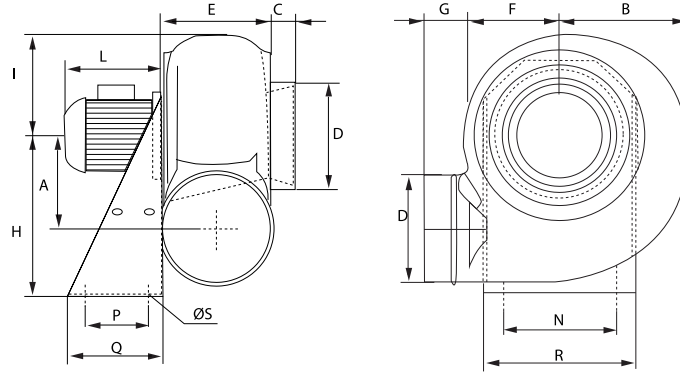
Sound power

63 Hz	75
125 Hz	77
250 Hz	75
500 Hz	76
1000 Hz	72
2000 Hz	67
4000 Hz	59
8000 Hz	51
TOTAL	82

Sound pressure 1.5 metre (in)

63 Hz	60
125 Hz	62
250 Hz	60
500 Hz	61
1000 Hz	57
2000 Hz	52
4000 Hz	44
8000 Hz	36
TOTAL	67

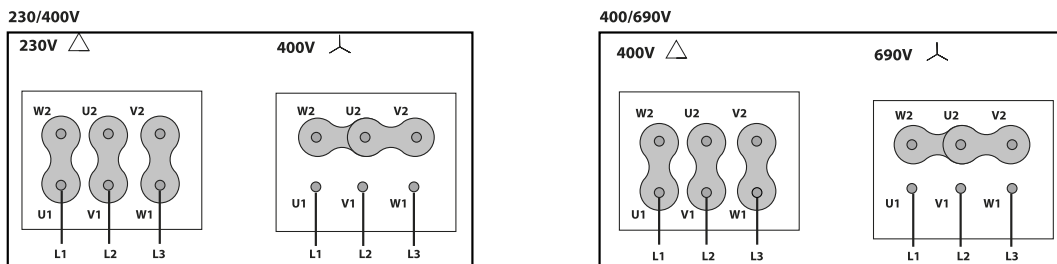
DIMENSIONS



Dimensions (mm)

A	240	B	280	C	40	DØ	250	E	200
F	210	G	70	H	410	I	230	L	220
N	320	P	150	Q	230	R	355	S	11

WIRING DIAGRAM



ACCESSORIES



SAFETY SWITCH
INT 25 3P A
REF: INT253PA



ANTI-VIBRATING FLANGE 400º/2H
BA-400 25
REF: 960002051



ATEX SWITCH
INT 16 ATEX
REF: 510200016X



PVC FLEXIBLE JOINT
FJ Ø250
REF: FJ-250



DIFUSOR GRID
DG Ø250
REF: DG250



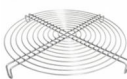
CIRCULAR GRAVITY DAMPER
CSC Ø250
REF: CSC250



ADJUSTABLE DAMPER
AD Ø250
REF: AD-250



DRAIN PLUG
PD 1
REF: PD1



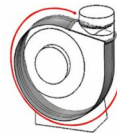
STAINLESS STEEL PROTECTION GRID
RPI Ø250
REF: RPI250



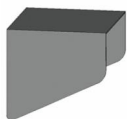
WALL SUPPORT
WS 1
REF: WS1



ANTI-VIBRATION BLOCK
AV 2
REF: AV-2



CASING PROTECTION
PC 31
REF: PC31



MOTOR PROTECTION
PCM 2
REF: PCM2



FREQUENCY SPEED CONTROLLER
SFC 400 III 1,2A *
REF: SFC400III1

SPARE PARTS

	Code	Family	Model	RPM	Degrees
1	T03003141	1 x TURBINE	MBPX 31 T4 0,25 kW LG	-	-